

School District Legal Boundary Description

The following is a land description of the legal boundaries of Bruneau-Grand View Joint School District No. 365, Owyhee and Elmore Counties.

Beginning at a point where the middle of the main channel of the Snake River at the intersection of the Ada-Elmore county line with the Snake River at approximately the north side of Section 6, T 4 S, R 2 EBM. Thence NW following the middle of the main channel of the Snake River to the middle of the main channel on said river at approximately the NE corner of Section 7, T 3 S, R 1 EBM. Thence 2 miles west in Owyhee County on the sections lines to the NW corner of Section 12, T 3 S, R 1 WBM. Thence south 3 miles to the SW corner of Section 24, T 3 S, R 1 WBM. Thence 3 miles west to the NW corner of Section 28, T 3 S, R 1 WBM. Thence 1 mile south to the SW corner Section 28, T 3 S, R 1 WBM. Thence 1 mile west to the SE corner of Section 30, T 3 S, R 1 WBM. Thence 1 mile south to the SW corner of Section 32, T 3 S, R 1 WBM. Thence 1 mile west to the NW corner of Section 6, T 4 S, R 1 WBM. Thence 1 mile south to the SW corner of Section 6, T 4 S, R 1 WBM. Thence 1 mile west to the NW corner of Section 12, T 4 S, R 2 WBM. Thence 1 mile south to the SW corner of Section 12, T 4 S, R 2 WBM. Thence 4 miles west to the NW corner of Section 17, T 4 S, R 2 WBM. Thence 4 miles south to the SW corner of Section 32, T 4 S, R 2 WBM. Thence 1 mile west to the NW corner of Section 6, T 5 S, R 2 WBM. Thence 6 miles south to the SW corner of Section 31, T 5 S, R 2 WBM. Thence 6 miles west to the NW corner of Section 6, T 6 S, R 3 WBM. Thence 12 miles south to the SW corner of Section 31, T 7 S, R 3 WBM. Thence 12 miles east to the SW corner of Section 31, T 7 S, R 1 WBM. Thence 6 miles south to the NW corner of Section 6, T 9 S, R 1 WBM. Thence 6 miles west to the NW corner of Section 6, T 9 S, R 2 WBM. Thence 24 miles south to the SW corner of Section 31, T 12 S, R 2 WBM. Thence 12 miles west to the NW corner of Section 6, T 13 S, R 4 WBM. Thence approximately 23 miles south to the SW corner of Section 30, T 16 S, R 4 WBM on the Idaho-Nevada border line. Thence 66 miles east in T 16 S, R 7 EBM on the Idaho-Nevada border line. Thence 17 miles north to the NE corner of Section 1, T 14 S, R 7 EBM. Thence approximately 27 ½ miles east to the SW ¼ Section 34, T 13 S, R 12 EBM on the Owyhee-Twin Falls county line. Thence 23 miles north following the Owyhee-Twin Falls county line to the NW ¼ Section 10, T 10 S, R 12 EBM. Thence approximately 3 ½ miles west to SE corner of Section 1, T 10 S, R 11 EBM. Thence 7 miles north to the NE corner of Section 1, T 9 S, R 11 EBM. Thence approximately 3 ½ miles east to the SW ¼ of Section 34, T 8 S, R 12 EBM. Thence 6 miles north on the Owyhee-Twin Falls County line to the NW ¼ Section 3, T 8 S, R 12 EBM on the Owyhee-Twin Falls-Elmore County line. Thence 21 ½ miles west following the Owyhee-Elmore County line to the NW corner of Section 6, T 8 S, R 9 EBM on the Owyhee-Elmore county line. Thence 4 miles north on the Owyhee-Elmore County line to the NE corner of Section 13, T 7 S, R 8 EBM. Thence 10 miles west to the SE corner of Section 8, T S, R 7 EBM. Thence approximately 2 miles north to

the NE corner of Section 5, T 7 S, R 7 EBM. Thence east to the SE corner of Section 32, T 6 S, R 7 EBM. Thence approximately 7 miles north on the east boundary line of Section 29, T 5 S, R 7 EBM to the middle of the main channel of the Snake River. Thence west following the middle of the main channel of the Snake River to the east side of Section 33, T 5 S, R 4 EBM at the middle of the main channel of the Snake River. Thence north 11 1/2 miles in Elmore County to the Ada-Elmore County line at the NE corner of Section 4, T 4 S, R 4 EBM. Thence west 14 1/2 miles to the point of intersection with the Snake River at the middle of the main channel being approximately the north side of Section 6, T 4 S, R 2 EBM at the point of beginning.

Legal source: Idaho Code 33-306 "Boundaries of school districts."

Adopted: April 25, 2002

Reviewed: January 26, 2004, November 7, 2007

Revised: February 10, 2011 by Order of the Idaho State Tax Commission

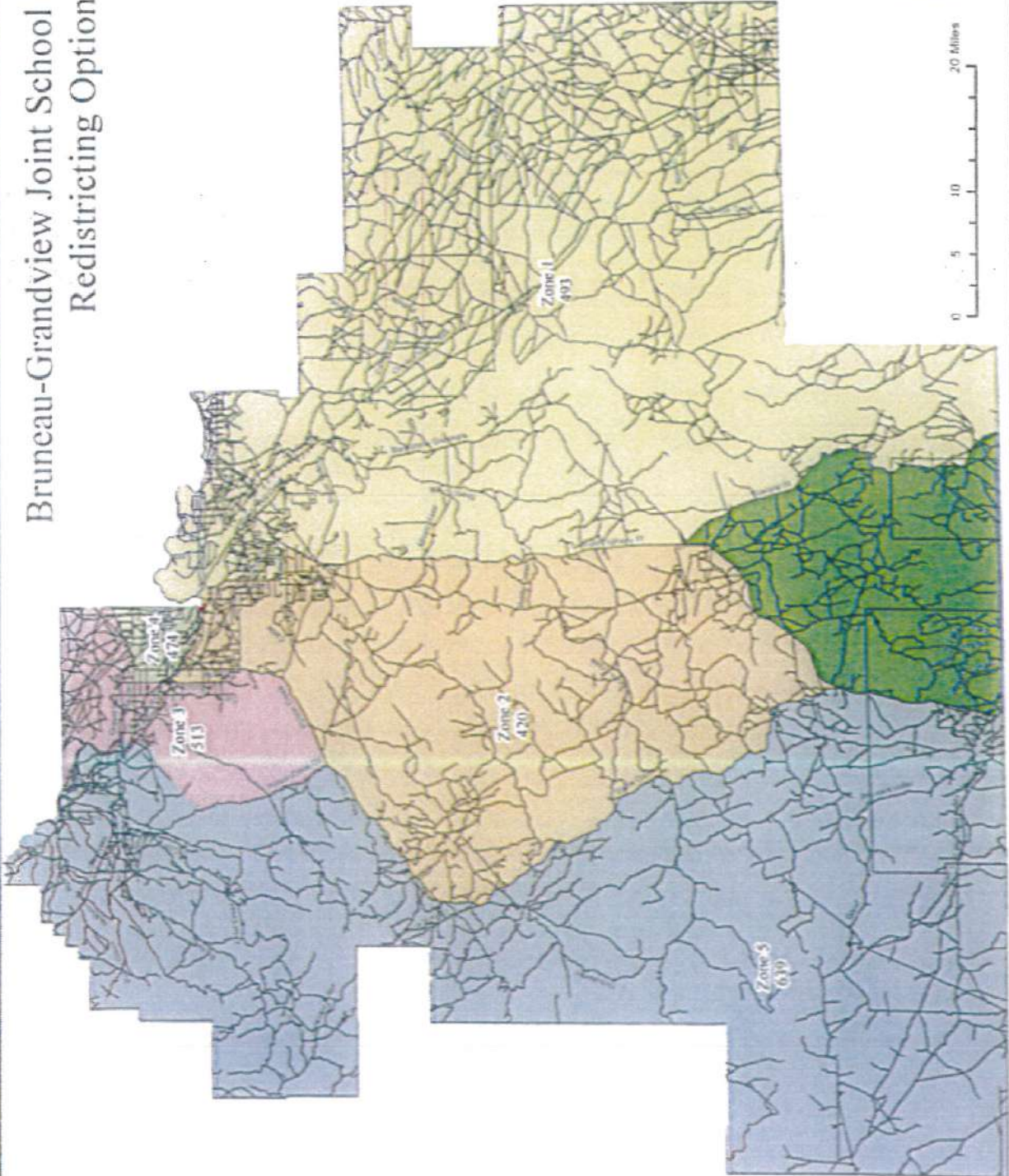
Bruneau-Grandview Joint School District # 365 Redistricting Option



Trustee Zone	Population	Variance
1	493	6.1%
2	525	0.0%
3	511	2.0%
4	499	6.7%
5	518	1.0%
Total	2,539	

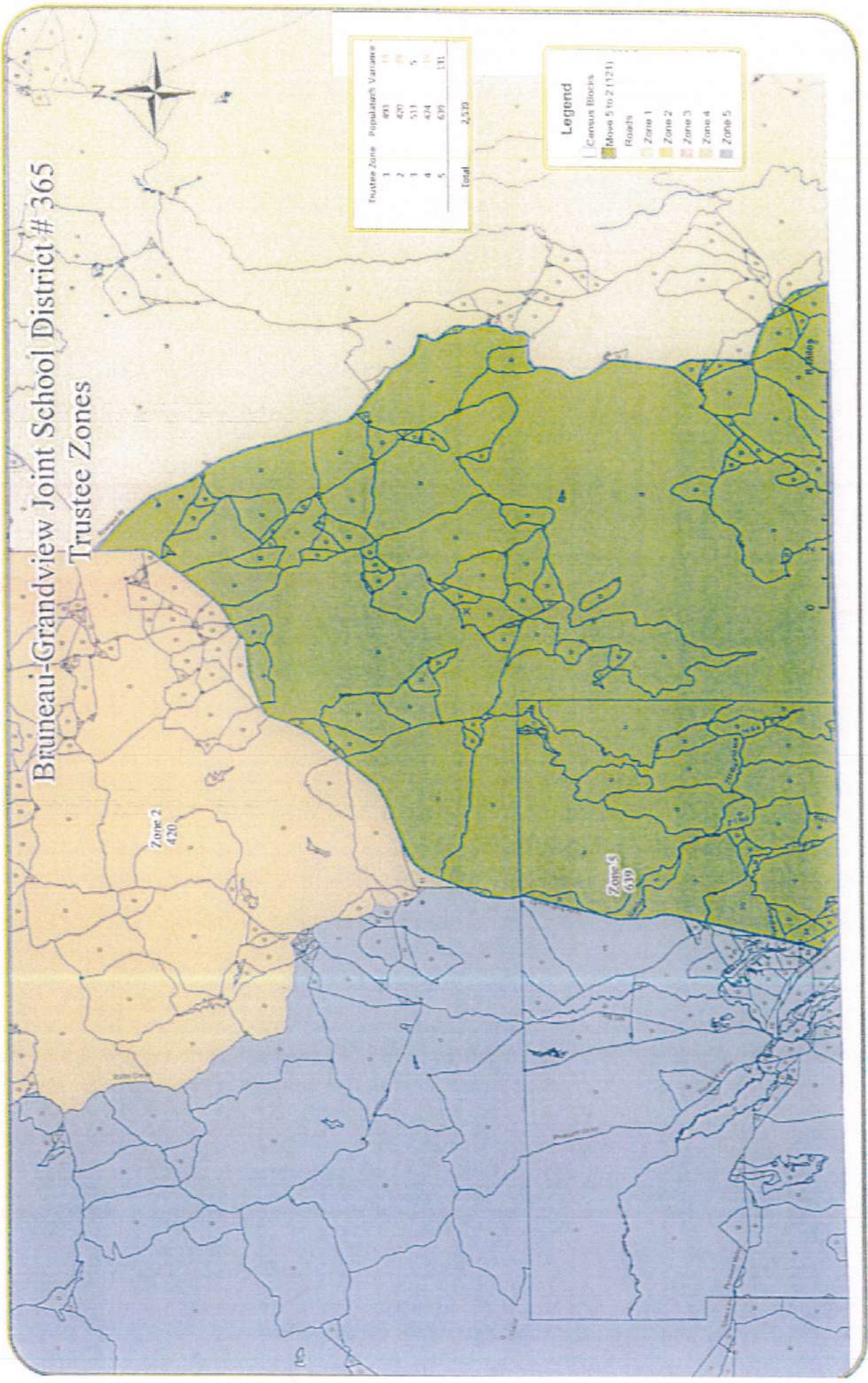
Legend

- Roads
- Move 5 to 2 (121)
- Move 2 to 4 (16)
- Zone 1
- Zone 2
- Zone 3
- Zone 4
- Zone 5



REDISTRICTING MOVING SOUTHERN PORTION
ZONE 5 TO ZONE 2

Bruneau-Grandview Joint School District # 365
Trustee Zones



Trustee Zone	Population	Variance
1	493	15
2	420	89
3	511	5
4	474	10
5	619	131
Total	2,117	

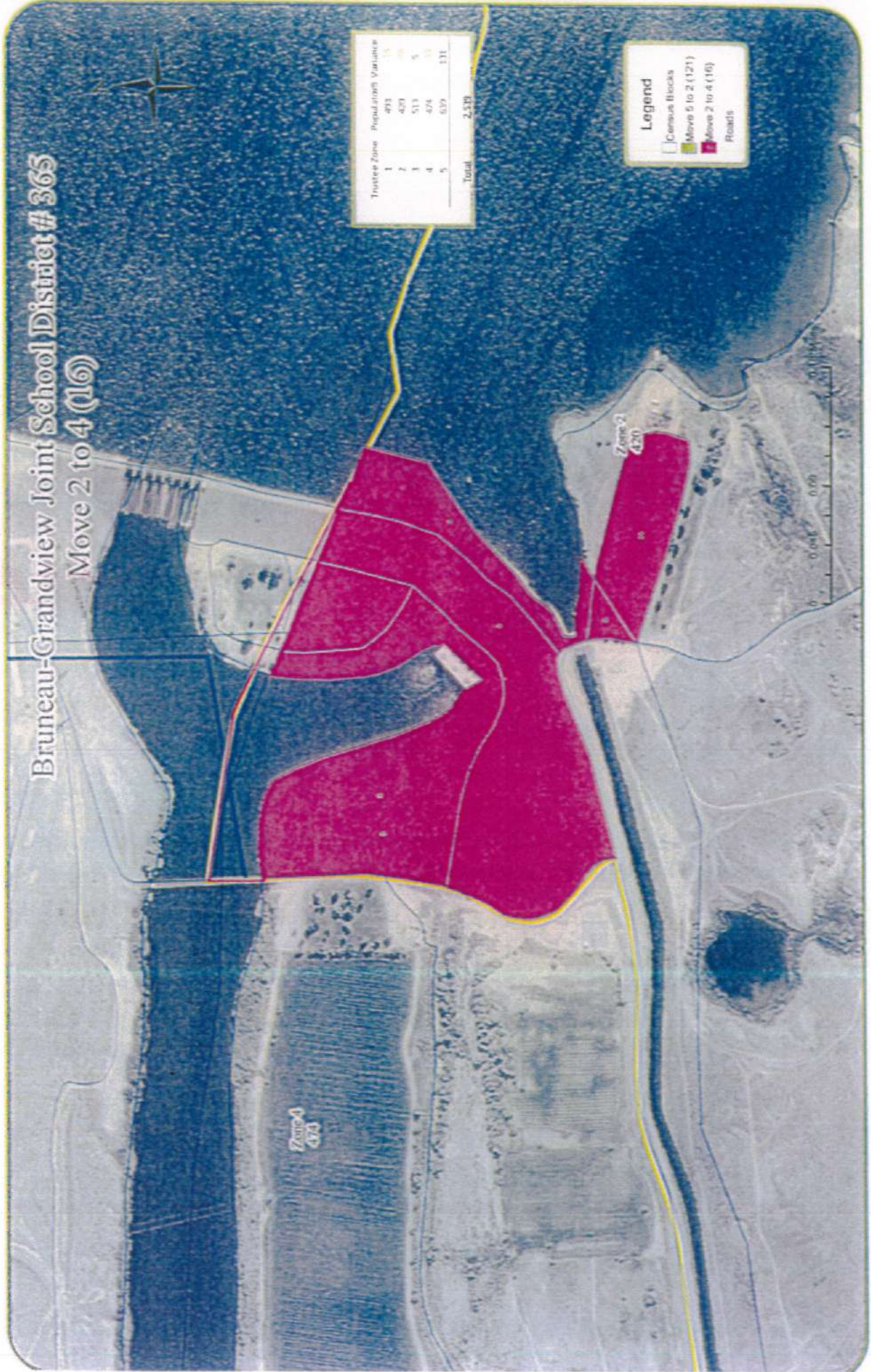
Legend

- Census Blocks
- Move 5 to 2 (121)
- Roads
- Zone 1
- Zone 2
- Zone 3
- Zone 4
- Zone 5

REDISTRICTING - Move FROM Zone 2 (STRIKE DAM HOUSING) TO ZONE 4 (16 PEOPLE)

Bruneau-Grandview Joint School District # 365

Move 2 to 4 (16)



REDISTRICITING · MOUL STRIKE DAM HOUSING TO ZONE 4
FROM ZONE 2 (16 PEOPLE)

Bruneau-Grandview Joint School District # 365
Move 2 to 4 (16)



Ward	Zone	Population	Variance
1	1	493	
2	2	481	
3	3	511	
4	4	434	
5	5	639	(16)
Total		2,558	

Legend

- City Block
- Move 5 to 2 (11211)
- Move 2 to 4 (16)
- Ward 1
- Ward 2
- Ward 3
- Ward 4
- Ward 5

